



Agriculture

Tires | Tubes | Wheels



***Making Customers'
Lives Easier®***



OTR Engineered Solutions (OTR)

is your global partner for high-quality off-the-road tires, wheels, assemblies, and accessories. We are proud to supply end-user customers, dealers, and original equipment manufacturers with engineered solutions to meet and exceed common – and uncommon – challenges in such core markets as Agriculture, Construction, Forestry, Industrial, Lawn & Garden, Material Handling, Mining, Powersports, and Specialty Vehicles. But our success is much more than the products we offer. We're a multinational enterprise with more than 1,400 employees throughout 30+ facilities worldwide dedicated to supporting you with a full range of high-level services.

Agriculture

Our agricultural tires and wheels are the result of many years of experience, innovation, and a hands-on approach to help ensure they get the job done the way you want. Whatever the equipment – light- to heavy-duty tractors, harvesting vehicles, sprayers, trailers, implements, pivot irrigation, and more – we have solutions to effectively traverse mud, stubble, turf, rocky soils, and anything else a farm can throw at them.



Table of Contents

Tires

LAWN TRAC	6
XT-41.....	7
WORKBOSS® CT.....	8
FIELD MASTER	9
TRACTION MASTER	10
CROP MASTER	11
CROP TRACX	11
BIG FOOT.....	12
RAINMAX R1	12
RAINMAX H ₂ O.....	13
RAINMAX N/D	13
LITEFOOT PRO.....	14
LITEFOOT R1	14
I-1 RIB IMPLEMENT	15
BUSHMASTER RIB.....	16
PLANTING/SEEDING TIRES.....	17-18
CLOSING WHEEL ASSEMBLIES	18
GAUGE WHEEL ASSEMBLIES	19
PRESS WHEEL ASSEMBLIES	20

Tubes

BUTYL RUBBER TUBES.....	21-24
NATURAL RUBBER TUBES	24

Wheels

ROTARY CUTTER WHEELS	25
STANDARD IMPLEMENT WHEELS	26
PIVOT WHEELS	27

Accessories	28
--------------------------	----

Services

Mounting & Sequencing.....	29
TyrLyner®.....	29

Custom Engineering

Custom Tires and Assemblies	30
Specialty Wheels	31
Ballast Counterweights	31

Information & Disclaimers	32
--	----

Tires

Quick Reference Guide



LAWN TRAC

6



XT-41

7



WORKBOSS® CT

8



FIELD MASTER

9



TRACTION
MASTER

10



CROP MASTER

11



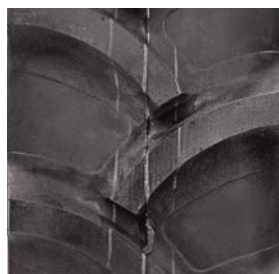
CROP TRACX

11



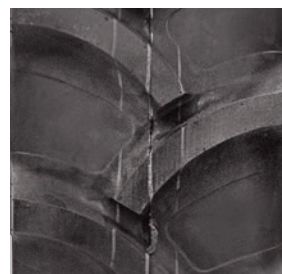
BIG FOOT

12



RAINMAX R1

12



RAINMAX H₂O

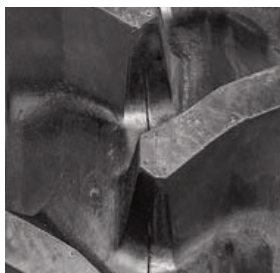
13



RAINMAX N/D 13



LITEFOOT PRO 14



LITEFOOT R1 14



**I-1 RIB
IMPLEMENT** 15



**BUSHMASTER
RIB** 16



**PLANTING/
SEEDING TIRES** 17-18



CLOSING WHEEL 18
ASSEMBLIES



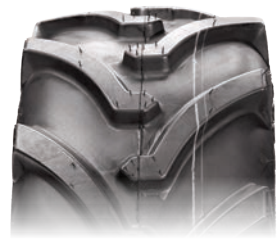
GAUGE WHEEL 19
ASSEMBLIES



PRESS WHEEL 20
ASSEMBLIES

LAWN TRAC

LAWN TRAC provides an open, deep lug design with a large footprint that maximizes ground contact for better grip – an excellent all-around solution for operating on muddy fields or hills. It's self-cleaning with lugs designed to eject mud and debris away from the tire, so there is no slowing down.



Tire Size	Ply	Rated Pressure	Overall Diameter	Section Width	Rim Size	Load Capacity	Part Number
		PSI (KPA)	IN (MM)	IN (MM)	IN	LBS@MPH (KG@KM/H)	
16X7.50-8	4	28 (190)	16.0 (406)	7.5 (191)	8X5.38	710@10 (315@15)	T10004167508
16X7.50-8	6	38 (260)	16.0 (406)	7.5 (191)	8X5.38	710@10 (315@15)	T10006167508
18X8.50-8	4	22 (150)	17.7 (450)	8.4 (213)	8X7.00	825@10 (375@15)	T10004188508
18X8.50-10	4	22 (150)	17.7 (450)	8.1 (206)	10X7.00	780@10 (345@15)	T100041885010
18X8.50-10	6	32 (220)	17.7 (450)	8.1 (206)	TBA	1,050@10 (475@15)	T100061885010
18X8.50-10	8	32 (220)	17.9 (453)	8.1 (206)	10X7.00	1,100@10 (500@15)	T100081885010
18X9.50-8	4	22 (150)	18.1 (460)	8.4 (213)	8X7.00	1,050@10 (475@15)	TR10004189508
23X8.50-12	12	90 (620)	22.6 (575)	8.6 (218)	12X7	2,680@10 (1,215@15)	T100122385012P
23X10.50-12	4	20 (140)	22.8 (579)	10.5 (267)	12X8.50	1,320@10 (600@15)	T1000423105012
23X10.50-12	6	32 (220)	23.0 (584)	10.5 (267)	TBA	1,760@10 (800@15)	T1000623105012
24X12.00-12	4	20 (140)	23.9 (608)	12.1 (308)	12X10.50	1,710@10 (775@15)	T1000424120012
26X10.00-12	4	22 (150)	25.9 (657)	10.3 (261)	12X8.50	1,710@10 (775@15)	T1000426100012
26X12.00-12	4	20 (140)	26.0 (660)	12.3 (312)	12X10.50	1,760@10 (800@15)	T1000426120012
26X12.00-12	4	20 (140)	26.2 (665)	12.3 (312)	12X10.50	1,760@10 (800@15)	T1000426120012RG*
26X12.00-12	8	20 (140)	26.2 (665)	12.3 (312)	12X10.5	1,760@10 (800@15)	T261212025
26X12.00-12	8	TBA	TBA	TBA	TBA	TBA	T1000826120012

*RIM GUARD

XT-41

XT-41 is a game-changing “hybrid” crossover tire blending R4 and R1 tread patterns for maximum flexibility when operating on- or off-road. Ideal for compact equipment, the tire’s high tread-to-void ratio makes it well suited for handling hard surfaces, with overlapping center tread blocks that reduce wear and improve ride comfort. It features rock ejectors in between lugs to ensure high performance when operating in wet or muddy conditions. Exceptional traction in all conditions – from soft, wet ground to hard pack – makes this tire an exceptional value for fleets and owner-operators.



Tire Size	Ply	Rated Pressure	Overall Diameter	Section Width	Rim Size	Load Capacity	Part Number
		PSI (KPA)	IN (MM)	IN (MM)	IN	LBS@MPH (KG@KM/H)	
18X8.50-10	4	22 (150)	17.8 (452)	7.9 (200)	10X7.00	780@10 (345@15)	T198041885010
18X8.50-10	6	32 (220)	17.8 (452)	8.0 (203)	10X7.00	1,050@10 (475@15)	T198061885010
18X8.50-10	8	44 (300)	17.8 (452)	8.0 (203)	10X7.00	1,230@10 (560@15)	T198081885010
23X8.50-12	6	35 (240)	22.8 (579)	8.4 (212)	12X7.00	1,470@10 (650@15)	T198062385012
26X12.00-12	4	20 (140)	26.0 (660)	12.0 (305)	12X10.50	1,760@10 (800@15)	T1980426120012
26X12.00-12	8	42 (290)	26.0 (660)	12.0 (305)	12X10.50	3,000@10 (1,360@15)	T1980826120012
12-16.5	6	40 (275)	33.5 (850)	11.7 (297)	16.5X9.75	4,180@5 1,900@10	T1980612165

OTHER SIZES AND TREAD PATTERNS AVAILABLE.



WORKBOSS® CT

The WORKBOSS CT is designed for compact tractors, with every detail of the tread, sidewall, and profile engineered for optimal performance. Industry-leading ply ratings allow operators and OEMs to easily match the right tire to the machine. This tire delivers a quieter ride and greater stability under load.



Tire Size	Ply	Rated Pressure	Overall Diameter	Section Width	Rim Size	Load Capacity	Part Number
		PSI (KPA)	IN (MM)	IN (MM)	IN	LBS@MPH (KG@KM/H)	
16X7.50-8	6	38 (260)	16.0 (406)	7.4 (188)	8X5.50	785@13 (355@20)	T-104035
18X8.50-10	8	46 (320)	17.8 (452)	8.3 (211)	10X7.00 AT	1,140@10 (515@15)	T-103851
23X8.50-12	6	36 (250)	22.8 (578)	8.4 (214)	12X7.00 JA	1,520@13 (690@20)	T-103227
24X12.00-12	6	32 (220)	24.0 (610)	12.0 (305)	12X10.50	2,040@13 (925@20)	T-104012
25X8.50-14	6	36 (250)	25.2 (640)	8.2 (208)	14X7.00	1,610@13 (730@20)	T-104046
26X12.00-12	8	42 (290)	26.0 (660)	11.9 (302)	12X10.50 AT	2,705@13 (1,215@20)	T-103817
27X8.50-15	8	44 (300)	26.9 (683)	8.6 (218)	15X7.00	2,150@13 (975@20)	T-104051
10-16.5	6	30 (210)	30.5 (775)	10.2 (259)	16.5X8.25	2,270@13 (1,030@20)	T-104001
12-16.5	6	42 (290)	32.7 (831)	12.1 (307)	16.5X9.75	4,180@5 (1,900@10)	T-103236
14-17.5	6	32 (220)	36.3 (922)	13.7 (348)	17.5X10.50	4,800@5 (2,180@10)	T-103239
14.9-24	8	30 (210)	49.3 (1,252)	15.1 (384)	24XW12	6,950@13 (3,150@20)	T-104057
15-19.5	6	30 (210)	40.3 (1,024)	15.3 (389)	19.5X11.75	4,180@13 (1,900@20)	T-104052
43X16.00-20	6	30 (210)	43.1 (1,095)	15.9 (404)	20XW13L	5,680@13 (2,575@20)	T-104056
16.9-24	6	30 (210)	51.7 (1,313)	17.0 (432)	24XW13L	8,250@13 (3,750@20)	T-104067

FIELD MASTER

FIELD MASTER features an aggressive tread with angled lugs to enhance grip on rough terrain. Its wide stance and reinforced casing ensure stability and durability, providing a flexible solution for agriculture applications while delivering a good overall value.

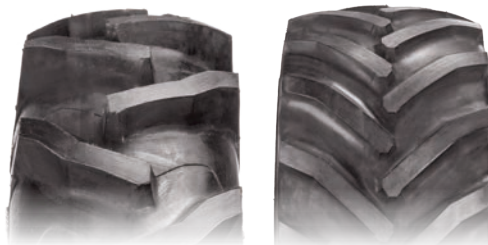


Tire Size	Ply	Rated Pressure	Overall Diameter	Section Width	Rim Size	Load Capacity	Part Number
		PSI (KPA)	IN (MM)	IN (MM)	IN	LBS@MPH (KG@KM/H)	
4.80/4.00-8	4	42 (290)	17.0 (432)	4.3 (110)	8X3	500@5 (224@10)	T188044804008
4.80X4.00-8	4	TBA	TBA	TBA	TBA	TBA	T48048003
13X5.00-6	4	20 (140)	13.0 (330)	4.7 (118)	6X3.25	440@10 (200@15)	T1356016
16X6.50-8	6	TBA	TBA	TBA	TBA	TBA	T16658011
18X9.50-8	2	TBA	TBA	TBA	TBA	TBA	T189508014
18X9.50-8	4	TBA	TBA	TBA	TBA	TBA	T189508016
20X10.00-8	4	TBA	TBA	TBA	TBA	TBA	T20108007
21X11.00-10	4	TBA	TBA	TBA	TBA	TBA	T1040421110010
23X10.50-12	6	TBA	TBA	TBA	TBA	TBA	T23105012011
26X12.00-12	4	TBA	TBA	TBA	TBA	TBA	T261212002
26X12.00-12	4	TBA	TBA	TBA	TBA	TBA	T261212015
26X12.00-12	8	50 (345)	26.2 (665)	12.8 (665)	12X10.50	3,020@10 (1,360@15)	T1040826120012



TRACTION MASTER

TRACTION MASTER features deep, flat, layered lugs for superior grip and handling on soft ground with extra-wide shoulders and rim guards for protection against side impact. It's cut- and puncture-resistant with a self-cleaning design.



Tire Size	Ply	Rated Pressure	Overall Diameter	Section Width	Rim Size	Load Capacity	Part Number
		PSI (KPA)	IN (MM)	IN (MM)	IN	LBS@MPH (KG@KM/H)	
7.2-16	8	48 (330)	29.4 (748)	7.1 (180)	16X6.00	910@20 (412@30)	T17087216
8-16	6	28 (190)	31.7 (805)	8.0 (203)	16X6.00	1,360@20 (615@30)	T170680016
8.3-16	6	34 (235)	31.2 (792)	8.6 (219)	16X6.00	1,330@20 (600@30)	T17068316
29X12.5-15	8	40 (275)	28.9 (734)	12.5 (318)	15X10.00	1,980@10 (900@15)	T13082912515
31X15.50-15	10	60 (415)	31.0 (787)	14.3 (363)	15X13.00	4,225@10 (1,900@15)	T131031155015
31X15.50-15	8	45 (310)	31.0 (787)	14.3 (363)	15X13.00	3,645@10 (1,650@15)	T130831155015

Traction Master



- T17087216
- T170680016
- T17068316



- T13082912515
- T131031155015
- T130831155015

CROP MASTER

CROP MASTER features a field-friendly R1 tread with heavy-duty construction that covers all the bases. Durable and long-lasting, it has exceptional flotation characteristics and load capacity. Its directional lug design and contact area ensure traction and handling on a variety of surfaces, wet or dry, providing for ride comfort and minimal soil compaction. This tire truly masters the mobility requirements of field work all season long.



Tire Size	Ply	Rated Pressure	Overall Diameter	Section Width	Rim Size	Load Capacity	Part Number
		PSI (KPA)	IN (MM)	IN (MM)	IN	LBS@MPH (KG@KM/H)	
9.5-16	6	30 (210)	33.5 (852)	9.5 (241)	16X8.00	1,390@20 (630@30)	T60069516R1
9.5-22	8	40 (275)	40.0 (1,017)	9.7 (245)	22X7.00	1,760@20 (800@30)	T60089522R1

CROP TRACX

CROP TRACX offers a unique G1W lug design that extends sidewall-to-sidewall. This functions like a cleat for maximum traction, especially when operating on wet soil. At the same time, its tread pattern ensures a smooth ride on hard surfaces with minimal wear thanks to heavy-duty construction and a premium compound, making this an exceptional solution, especially for compact tractors.



Tire Size	Ply	Rated Pressure	Overall Diameter	Section Width	Rim Size	Load Capacity	Part Number
		PSI (KPA)	IN (MM)	IN (MM)	IN	LBS@MPH (KG@KM/H)	
7-16	4	24 (165)	29.2 (742)	7.1 (181)	16X5.00	855@20 (387@30)	T6004716
8-16	4	18 (125)	30.8 (781)	8.1 (205)	16X5.00	1,070@20 (487@30)	T6004816



BIG FOOT

BIG FOOT uses an R1 tread pattern with ultra-deep lugs and low void-to-tread ratio, delivering excellent traction – especially on wet and muddy surfaces – with a self-cleaning feature. Its construction provides cut and chip resistance for operating in fields, enhancing durability and useful operating life.



Tire Size	Ply	Rated Pressure	Overall Diameter	Section Width	Rim Size	Load Capacity	Part Number
		PSI (KPA)	IN (MM)	IN (MM)	IN	LBS@MPH (KG@KM/H)	
5-12	4	35 (240)	21.7 (550)	4.8 (123)	12X4.00	490@20 (218@30)	T6004512
6-14	4	36 (250)	26.5 (674)	6.6 (167)	14X5.00	805@25 (365@40)	T6004614
8-18	4	18 (125)	32.8 (834)	8.1 (206)	18X6.00	1,140@20 (515@30)	T6004818
8-18	6	28 (190)	32.8 (834)	7.8 (199)	18X6.00	1,140@20 (515@30)	T6006818
8.3-20	4	34 (235)	35.0 (889)	9.5 (241)	20X7.00	1,980@20 (900@30)	T60048320
8.3-20	6	34 (235)	35 (889)	9.5 (241)	20 X 7.00	1,235@20 (560@30)	T1535068320
11.2-24	4	18 (125)	43.1 (1,095)	11.0 (280)	24X9.00	1,650@25 (750@40)	T600411224
12.4-24	4	16 (110)	45.6 (1,157)	11.9 (302)	24X10.00	1,870@25 (850@40)	T600412424
13.6-26	6	22 (150)	49.6 (1,260)	13.4 (340)	26X11.00	2,800@25 (1,250@40)	T600413626
180/85D12	4	23 (160)	26.0 (661)	6.8 (173)	12X4.50	595@20 (265@30)	T60041808512

RAINMAX R1

RAINMAX R1 is a popular directional R1 tire designed for irrigation equipment using center pivot style wheels. Its unique design features deep cleated lugs that are curved to prevent ruts and slipping on hills. Heavy-duty construction and reinforced sidewalls, coupled with a unique tread pattern, delivers superior traction and handling on wet and muddy ground.



Tire Size	Ply	Rated Pressure	Overall Diameter	Section Width	Rim Size	Load Capacity	Part Number
		PSI (KPA)	IN (MM)	IN (MM)	IN	LBS@MPH (KG@KM/H)	
11.2-38	6	26 (180)	58.7 (1,490)	11.8 (300)	38X10.00	2,600@25 (1,180@40)	T690611238
14.9-24	6	26 (180)	51.2 (1,301)	15.0 (380)	24X12.00	3,420@1 (1,550@3)	T690614924

RAINMAX H₂O

RAINMAX H₂O is an R1 tire for irrigation equipment using center pivot style wheels, offering enhanced protection from environmental stresses that cause premature aging and failures. Its heavy-duty construction, tread pattern, and premium UV-resistant compounds ensure long life. The lug design – derived from OTR's proven RAINMAX tire – maximizes traction on wet and muddy ground with a self-cleaning feature, making this an excellent all-around mobility solution for irrigation.



Tire Size	Ply	Rated Pressure	Overall Diameter	Section Width	Rim Size	Load Capacity	Part Number
		PSI (KPA)	IN (MM)	IN (MM)	IN	LBS@MPH (KG@KM/H)	
11-22.5	10	45 (310)	42.5 (1,080)	11.0 (280)	22.5X8.25	5,060@10 (2,240@15)	T2151011225
11-24.5	10	45 (310)	44.5 (1,129)	10.8 (275)	24.5X8.25	5,060@10 (2,240@15)	T2151011245
11.2-24	6	26 (180)	44.0 (1,117)	11.4 (289)	24X10.00	3,000@1 (1,360@3)	T2150611224
11.2-38	6	26 (180)	57.5 (1,461)	11.5 (292)	38X10.00	2,540@25 (1,150@40)	T2150611238
14.9-24	6	20 (140)	50.0 (1,271)	14.7 (372)	24X12.00	3,000@25 (1,360@40)	T2150614924

RAINMAX N/D

RAINMAX N/D is designed for irrigation equipment using center pivot style wheels. Its unique design features deep cleated lugs that are curved to prevent ruts and slipping on hills. The non-directional tread pattern maximizes traction when rotating in either direction of the irrigation system.



Tire Size	Ply	Rated Pressure	Overall Diameter	Section Width	Rim Size	Load Capacity	Part Number
		PSI (KPA)	IN (MM)	IN (MM)	IN	LBS@MPH (KG@KM/H)	
11.2-24	6	26 (180)	43.5 (1,106)	10.9 (278)	24X10.00	3,000@1 (1,360@3)	T11224015
11.2-38	6	26 (180)	58.3 (1,480)	11.7 (296)	38X10.00	2,600@25 (1,180@40)	T11238011
14.9-24	6	20 (140)	49.4 (1,255)	14.7 (373)	24X13.00	3,000@25 (1,360@40)	T14924018



LITEFOOT PRO

LITEFOOT PRO is a turf-friendly tire for subcompact and compact tractors. It features symmetrical tread blocks and broad shoulders that optimize ground contact and traction while operating on slopes. Sipes and deep grooves ensure self-cleaning, improving traction in wet and muddy conditions.



Tire Size	Ply	Rated Pressure	Overall Diameter	Section Width	Rim Size	Load Capacity	Part Number
		PSI (KPA)	IN (MM)	IN (MM)	IN	LBS@MPH (KG@KM/H)	
12-16.5	6	40 (275)	33.6 (853)	11.9 (302)	16.5X9.75	4,180@5 (1,900@10)	T2090612165
12-16.5	10	65 (450)	33.6 (853)	11.9 (302)	16.5X9.75	6,320@5 (2,800@10)	T2091012165
23X8.50-12	6	35 (240)	22.9 (582)	8.5 (215)	12X7.00	1,470@10 (650@15)	T209062385012
41X18LL.225	14	50 (345)	41.2 (1,046)	17.6 (446)	22.5X14.00	9,200@10 (4,125@15)	T209144118LL225
41X18LL.225	20	80 (550)	41.2 (1,046)	17.6 (446)	22.5X14.00	14,800@10 (6,700@15)	T209204118LL225

LITEFOOT R1

The LITEFOOT R1 features deep angled lugs for improved grip and handling in wet fields. It provides exceptional performance for any ag application with good overall value for the money.



Tire Size	Ply	Rated Pressure	Overall Diameter	Section Width	Rim Size	Load Capacity	Part Number
		PSI (KPA)	IN (MM)	IN (MM)	IN	LBS@MPH (KG@KM/H)	
8.3-22	6	35 (240)	TBA	TBA	22X7.00	1,760 (800)	T60068322R1

I-1 RIB IMPLEMENT

I-1 RIB IMPLEMENT tires are designed for heavy-duty agricultural use with 8-ply construction and a cut- and puncture-resistant compound featuring Stubble Guard technology. This unique feature effectively protects the tire from residual stubble damage, enhancing durability while reducing costs.



Tire Size	Ply	Rated Pressure	Overall Diameter	Section Width	Rim Size	Load Capacity	Part Number
		PSI (KPA)	IN (MM)	IN (MM)	IN	LBS@MPH (KG@KM/H)	
23X10.50-14	6	36 (250)	23.0 (583)	10.7 (272)	14X8.50	1,870@10 (850@15)	T150623105014
6.70-15 SL	8	44 (300)	27.8 (706)	7.1 (181)	15X5.00	1,930@10 (875@15)	T2020867015*
7.60-15 SL	8	44 (300)	28.9 (735)	7.8 (199)	15X5.00	1,610@5 (730@10)	T2020876015*



*OTR STUBBLE GUARD TECHNOLOGY

OTR's Stubble Guard technology comprises heavy-duty construction and compounds with extra layering that provides cut, chip, and puncture-resistance for vehicles operating in harm's way. This technology is especially well suited for tires used in agricultural related equipment, such as farm implements, trailers, wagons, and tractors (as front tires).



BUSHMASTER RIB

OTR's BUSHMASTER RIB tire and wheel system offers excellent traction and durability, ideal for a wide range of all brush and land clearing applications, such as rotary cutters. Its circumferential ribs and broad shoulder enhance operation in wet conditions. The wheels are corrosion resistant and designed to withstand shock, vibration and exposure to extreme weather.



Tire Size	Replaces Aircraft Size	Ply	Overall Diameter	Section Width	Rim Size	Foam Capacity	Part Number
			IN (MM)	IN (MM)	IN	LBS	
21X7.00-12	22 X 6.60-10	16	21.4 (543)	7.2 (182)	12X5 12X5.5	35	T125162170012TL
24X8.00-14	24 X 7.70-10	20	24.3 (616)	7.9 (201)	14X6	56	T125202480014
25X7.00-18	TBA	8	TBA	TBA	TBA	TBA	T25718008
26X9.00-14.5	28 X 9.00-12	16	26.6 (675)	8.9 (227)	14.5X6	79	T1252426900145
27X8.00-18	29 X 9.00-15	8	26.9 (684)	7.9 (201)	18X6	55	T125082780018TL
27X8.00-18	29 X 9.00-15	12	26.9 (684)	7.9 (201)	18X6	55	T125122780018

ASSEMBLY INFORMATION

Tire Size	Wheel Size	Bolt Holes	Wheel Color	Fill Type	Wheel Part Number	Tire Part Number	Assembly Part Number
21X7.00-12	12X5	5	BLACK	AIRFILL	W125002	T125162170012TL	A-102853
21X7.00-12	12X5.5	4	JD YELLOW	AIRFILL	W1255004	T125162170012TL	A-102851
21X7.00-12	12X5	4	JD YELLOW	FOAMFILL	1205002572	T125162170012TL	A-102849
21X7.00-12	12X5	5	BLACK	FOAMFILL	W125002	T125162170012TL	A-102852
24X8.00-14	14X6	5	BLACK	AIRFILL	W146002	T125202480014	14060100901
24X8.00-14	14X6	5	BLACK	FOAMFILL	W146002	T125202480014	TA140600141101
26X9.00-14.5	14.5X6	4	BLACK	FOAMFILL	W1456001	T1252426900145	TA145600141101
26X9.00-14.5	14.5X6	5	JD YELLOW	FOAMFILL	1456002572	T1252426900145	TA145600257201
25X7.00-18	18X6	5	BLACK	FOAMFILL	W186004	T25718008	TA25718005
27X8.00-18	18X6	5	BLACK	AIRFILL	W186004	T125082780018TL	101362

PLANTING/SEEDING TIRES

OTR offers a multitude of semi-pneumatic and solid tires for use on planters, seeders, and grain drills. All are manufactured with cut-resistant rubber compounds for maximum durability.



Tire Size	Overall Diameter	Section Width	Part Number
	IN (MM)	IN (MM)	
1X9 V TREAD CLINCHER	9 (228.6)	1 (25.4)	2A0969
1X10 SMOOTH CROWN CLINCHER	10 (254.0)	1 (25.4)	2A1044
1X10 TAPERED	10 (254.0)	1 (25.4)	2A1145-20
1X12 SMOOTH CROWN	12 (304.8)	1 (25.4)	2A1209
1.25X13.5 WEDGE CLINCHER	13.5 (342.9)	1.25 (31.75)	2A2579
2X13 V TREAD REG BASE	13 (330.2)	2 (50.8)	TBA
2X13 V TREAD CLINCHER	13 (330.2)	2 (50.8)	2A2374
2X13 CHINED	13 (330.2)	2 (50.8)	TBA
2X13 SINGLE RIB REG BASE	13 (330.2)	2 (50.8)	2A2356
2X13 SINGLE RIB CLINCHER	13 (330.2)	2 (50.8)	TBA
2X13 SMOOTH CROWN REG BASE	13 (330.2)	2 (50.8)	2A2312
2X13 SMOOTH CROWN CLINCHER	13 (330.2)	2 (50.8)	2A2332
2X14 V TREAD	14 (355.6)	2 (50.8)	TBA
2X16 OFFSET CHINED	16 (406.4)	2 (50.8)	TBA
2X16 SMOOTH CROWN CLINCHER	16 (406.4)	2 (50.8)	2A2606
2X16 SMOOTH CROWN REG BASE	16 (406.4)	2 (50.8)	TBA
2.5X13 CHINED	13 (330.2)	2.5 (63.5)	2A2306
2.5X16 CHINED CLINCHER	16 (406.4)	2.5 (63.5)	TBA
2.75X16 SIDE LIP	16 (406.4)	2.75 (69.9)	2A3606
2.75X16 SMOOTH CROWN CLINCHER	16 (406.4)	2.75 (69.9)	TBA

Tire Size	Overall Diameter	Section Width	Part Number
	IN (MM)	IN (MM)	
3X13 V TREAD CLINCHER	13 (330.2)	3 (76.2)	2A3376
3X13 DUAL RIB CLINCHER	13 (330.2)	3 (76.2)	2A3364
3X13 DUAL RIB REG BASE	13 (330.2)	3 (76.2)	TBA
3X13 SINGLE RIB CLINCHER	13 (330.2)	3 (76.2)	2A3367
3X13 SMOOTH CROWN CLINCHER	13 (330.2)	3 (76.2)	2A3306
3X13.25 CHINED REG BASE	13.25 (336.6)	3 (76.2)	2A3308
3X14 V TREAD CLINCHER	14 (355.6)	3 (76.2)	2A3476
3X14 V TREAD REG BASE	14 (355.6)	3 (76.2)	2A3478
3X16 V TREAD CLINCHER	16 (406.4)	3 (76.2)	TBA
3X16 CHINED	16 (406.4)	3 (76.2)	2A3608
3X16 SMOOTH CROWN CLINCHER	16 (406.4)	3 (76.2)	2A3602
3X16 SMOOTH CROWN REG BASE	16 (406.4)	3 (76.2)	2A3601
4X12 CHEVRON	12 (304.8)	4 (101.6)	2A4645
4X12 DUAL RIB	12 (304.8)	4 (101.6)	2A4268
4X12 SMOOTH CROWN REG BASE	12 (304.8)	4 (101.6)	2A4612
4X12 TRACTION	12 (304.8)	4 (101.6)	2A4282
4X14 V TREAD	14 (355.6)	4 (101.6)	2A4478
4X14 DBL SHOULDER	14 (355.6)	4 (101.6)	TBA
4X16 CHEVRON CLINCHER	16 (406.4)	4 (101.6)	2A4644
4X16 CHEVRON REG BASE	16 (406.4)	4 (101.6)	2A4645

Tire Size	Overall Diameter	Section Width	Part Number
	IN (MM)	IN (MM)	
PLANTING/SEEDING TIRES <i>CONTINUED</i>			
4X16 SMOOTH CROWN REG BASE	16 (406.4)	4 (101.6)	2A4612
4X16 SMOOTH CROWN CLINCHER	16 (406.4)	4 (101.6)	2A4615
4X16 TRACTION	16 (406.4)	4 (101.6)	2A4647
4X20 V TREAD CLINCHER	20 (508.0)	4 (101.6)	2A4067
4.5X16 CHINED	16 (406.4)	4.5 (114.3)	TBA
4.5X16 DEEP LIP CHINED	16 (406.4)	4.5 (114.3)	2A5605

Tire Size	Overall Diameter	Section Width	Part Number
	IN (MM)	IN (MM)	
PLANTING/SEEDING TIRES <i>CONTINUED</i>			
4.5X16 SIDE LIP	16 (406.4)	4.5 (114.3)	2A5602
6X12 SMOOTH CROWN CLINCHER	12 (304.8)	6 (152.4)	2A6208
6X12 SMOOTH CROWN REG BASE	12 (304.8)	6 (152.4)	TBA
6.5X12 SMOOTH CROWN	12 (304.8)	6.5 (165.1)	2A7208
6.5X12 TRACTION	12 (304.8)	6.5 (165.1)	2A7282

CLOSING WHEEL ASSEMBLIES

Closing wheel assemblies include a tire type that is designed to close the seed furrow when planting. A wide variety is available to best match the closing wheel to the soil conditions, planting style, residue management practices, and crops being planted.



Wheel Size	Tire	Rim Type	Diameter	Depth	Bearing	Part Number
			IN (MM)	IN (MM)	IN (MM)	
1X9	V TREAD CLINCHER	NYLON	9 (228.6)	1 (25.4)	1.57 (40.0)	A102769-BP
1X10	SMOOTH CROWN CLINCHER	NYLON	10 (254.0)	1 (25.4)	1.57 (40.0)	TBA
1X10	SMOOTH CROWN CLINCHER	STEEL	10 (254.0)	1 (25.4)	1.57 (40.0)	A102244-86
1X10	SMOOTH CROWN CLINCHER	STEEL	10 (254.0)	1 (25.4)	X-HOLE WATERPUMP	TBA
1X10	SOLID TAPERED	STEEL	10 (254.0)	1 (25.4)	1.57 (40.0)	A111445-86
1X12	SMOOTH CROWN TIRE	NYLON	12 (304.8)	1 (25.4)	1.57 (40.0)	TBA
1X12	SMOOTH CROWN TIRE	NYLON	12 (304.8)	1 (25.4)	GROOVE WATERPUMP	A122104-BP
1X12	SMOOTH CROWN TIRE	NYLON	12 (304.8)	1 (25.4)	X-HOLE WATERPUMP	A122704-BP

GAUGE WHEEL ASSEMBLIES

Gauge wheel assemblies are designed to regulate the penetration depth of seeds into the soil. Multiple units are available to fit all major manufacturers' equipment with styles to match various applications.



Wheel Size	Tire	Rim Type	Diameter	Depth	Bearing	Part Number
			IN (MM)	IN (MM)	IN (MM)	
2.5X16	CHINED	STEEL	16 (406.4)	2.5 (63.5)	1.57 (40.0)	A316204-86
4X16	CHEVRON	NYLON	16 (406.4)	4 (101.6)	1.57 (40.0)	A462345-BP
4X16	CHEVRON	STEEL	16 (406.4)	4 (101.6)	1.57 (40.0)	TBA
4X16	CHINED	STEEL	16 (406.4)	4 (101.6)	1.57 (40.0)	TBA
4X16	CHINED	STEEL	16 (406.4)	4 (101.6)	X-HOLE WATERPUMP	TBA
4X16	CHINED	STEEL	16 (406.4)	4 (101.6)	GROOVE WATERPUMP	TBA
4X16	SMOOTH CROWN CLINCHER	NYLON	16 (406.4)	4 (101.6)	1.57 (40.0)	A462316-86
4X16	SMOOTH CROWN CLINCHER	STEEL	16 (406.4)	4 (101.6)	X-HOLE WATERPUMP	TBA
4.5X16	CHINED	NYLON/ STEEL	16 (406.4)	4.5 (114.3)	1.57 (40.0)	A46P307-93
4.5X16	CHINED	NYLON/ STEEL	16 (406.4)	4.5 (114.3)	X-HOLE WATERPUMP	A462707-97
4.5X16	CHINED	NYLON/ STEEL	16 (406.4)	4.5 (114.3)	GROOVE WATERPUMP	A46P103-86
4.5X16	CHINED	STEEL	16 (406.4)	4.5 (114.3)	1.57 (40.0)	A462307-86
4.5X16	CHINED	STEEL	16 (406.4)	4.5 (114.3)	GROOVE WATERPUMP	A562108-86
4.5X16	CHINED (DEEP LIP)	NYLON/ STEEL	16 (406.4)	4.5 (114.3)	1.57 (40.0)	A467705-86

PRESS WHEEL ASSEMBLIES

Press wheel assemblies are designed to provide the right amount of compaction to best embed seeds during planting. Proprietary compounds enhance tire life by reducing stubble damage and ozone breakdown.



Wheel Size	Tire	Rim Type	Diameter	Depth	Bearing	Part Number
			IN (MM)	IN (MM)	IN (MM)	
1.25X13.5	WEDGE	NYLON	13.5 (342.9)	1.25 (31.8)	1.57 (40.0)	A122379-BP
2X13	SMOOTH CROWN CLINCHER	NYLON	13 (330.2)	2 (50.8)	1.57 (40.0)	A232732-BP
2X13	SMOOTH CROWN CLINCHER	NYLON	13 (330.2)	2 (50.8)	GROOVE WATERPUMP	A232832-BP
2X13	SMOOTH CROWN CLINCHER	STEEL	13 (330.2)	2 (50.8)	GROOVE WATERPUMP	A213636-86
2X13	SMOOTH CROWN CLINCHER	STEEL	13 (330.2)	2 (50.8)	1.77 (45.0)	A213536-86
3X13	SINGLE RIB	NYLON	13 (330.2)	3 (76.2)	1.57 (40.0)	A332356-BP
3X13	V TREAD	STEEL	13 (330.2)	3 (76.2)	1.57 (40.0)	A313878-86
3X13	DUAL RIB CLINCHER	STEEL	13 (330.2)	3 (76.2)	1.57 (40.0)	A313466-86
4X12	CHEVRON	NYLON	12 (304.8)	4 (101.6)	1.57 (40.0)	A412446-BP
4X12	CHEVRON	NYLON	12 (304.8)	4 (101.6)	GROOVE WATERPUMP	TBA
4X12	DUAL RIB	NYLON	12 (304.8)	4 (101.6)	GROOVE WATERPUMP	TBA
4X12	SMOOTH CROWN	STEEL	12 (304.8)	4 (101.6)	GROOVE WATERPUMP	TBA
4X14	V TREAD	STEEL	14 (355.6)	4 (101.6)	1.57 (40.0)	A414476-86
6X16	SMOOTH CROWN CLINCHER	STEEL	16 (406.4)	6 (152.4)	1.57 (40.0)	A616406-86
6.5X12	TRACTION	NYLON	12 (304.8)	6.5 (165.1)	1.57 (40.0)	A422382-BP
6.5X12	TRACTION	STEEL	12 (304.8)	6.5 (165.1)	1.57 (40.0)	TBA

Tubes



TRANS AMERICAN RUBBER

We believe in good old-fashioned customer service and doing the right thing each and every day. We will provide you a quality product, fair prices, and personal customer service. All of our products are manufactured to the highest quality. Our goal is to continuously exceed your expectations.



BUTYL RUBBER TUBES

OTR's TRANS AMERICAN RUBBER BUTYL tubes feature 100% butyl rubber for a premium tube solution. Tubes extend tire life, prevent air leakage, and add weight for improved traction. Butyl provides distinct advantages for agricultural equipment:

- Improved shock absorption and ride comfort.
- Excellent weatherability; resistant to heat, moisture, and chemical attack.
- Durability; resistant to flexing, abrasion, and tearing.

We offer 5-Star rated tubes for rear farm tires, using premium grade materials with a thickness optimized for heavy-duty use. This ensures tubes are durable and long-lasting. The area around the valve stem is reinforced so the stem will not pull out when subjected to forces generated by high-horsepower tractors and/or caused by low air pressure. Stems are constructed in brass so they will not corrode. As a result, 5-Star rated tubes are preferred by customers using tractors, sprayers, and tilling equipment.

Tube Size	Valve	Box Quantity		Part Number	
		STANDARD	STANDARD	5-STAR PREMIUM	5-STAR PREMIUM
4.00/5.00-15	TR15	14	5B01NB	-	-
11L-15/16	TR15CW	14	5B02	-	-
11L-15/16	TR15	14	5B05	-	-
12.5L-15/16	TR15CW	10	5B11	-	-
7.50-17/18	TR15	12	5B15	-	-
19.0/45-17	TR15	6	5B16	-	-

Tube Size	Valve	Box Quantity	Part Number	Box Quantity	Part Number
		STANDARD	STANDARD	5-STAR PREMIUM	5-STAR PREMIUM
BUTYL RUBBER TUBES <i>CONTINUED</i>					
4.00-19	TR15	12	5B17NB	-	-
750/825-20	TR15CW	9	5B33	-	-
7.50/8.25-20	TR15	9	5B35	-	-
9.00/10.00-20	TR15	7	5B36	-	-
1000/1100-16	TR15CW	10	5B38	-	-
11.00-16	TR150	10	5B42	-	-
14L-16.1	TR15CW	8	5B44	-	-
11LR14	TR13	14	5R00	-	-
7.5L/9.5LR14/15	TR13	16	5R02	-	-
5.50/6.00R15/16	TR15	20	5R03	-	-
7.5L/9.5LR14/15	TR218A	16	5R07	-	-
11L/12.5LR15/16	TR15	14	5R10	-	-
31X13.50/15.50R15	TR15	7	5R13	-	-
11L/12.5LR15/16	TR218A	14	5R15	-	-
10/11.00R15/16	TR15	10	5R18	-	-
10/11.00R15/16	TR218A	10	5R20	-	-
13.6/14LR16.1	TR15	8	5R21	-	-
13.6/14LR16.1	TR218A	8	5R24	-	-
16.5/18.4R16.1	TR218A	6	5R25	-	-
18.4/19.5/21.5LR16.1	TR218A	3	5R26	-	-
16.5/18.4R16.1	TR15	6	5R27	-	-
10.5L/12.5LR18/20	TR15	8	5R30	-	-
10.5L/12.5LR18/20	TR218A	8	5R35	-	-
6.00R16(GR16)	TR218A	10	5R45NB	-	-
7.50/9.00R10	TR218A	10	5R60NB	-	-
8.3-24	TR218A	10	6B05	-	-
9.5-24	TR218A	10	6B10	-	-
11.2/12.4-24	TR218A	5	6B15	-	-
19.5L-24	TR218A	3	6B20	-	-
13.6/14.9-26/28	TR218A	4	6B25	-	-
11.2/12.4-28	TR218A	5	6B30	-	-
16.9/14-30	TR218A	3	6B35	-	-
18.4-30	TR218A	3	6B40	-	-
16.9/14-34	TR218A	3	6B45	-	-
18.4-34	TR218A	3	6B50	-	-
11.2-38	TR218A	3	6B53	-	-
18.4/15-38	TR218A	2	6B60	-	-
18.4-42	TR218A	1	6B65	-	-
13.6R20	TR218A	7	6R00	-	-

Tube Size	Valve	Box Quantity	Part Number	Box Quantity	Part Number
		STANDARD	STANDARD	5-STAR PREMIUM	5-STAR PREMIUM
BUTYL RUBBER TUBES <i>CONTINUED</i>					
18.4/19.5/21LR24	TR218A	3	6R05	-	-
7.5/8.3/9.5R24	TR218A	5	6R10NB	-	-
11.2/12.4R24	TR218A	5	6R13	-	-
13.6/14.9R24	TR218A	5	6R16	-	-
16.9/17.5LR24	TR218A	3	6R19	-	-
23.1R26	TR218A	2	6R22	2	6PR22
11.2/12.4R26	TR218A	5	6R26	-	-
11.2/12.4R28	TR218A	5	6R27	-	-
13.6/14.9R26/28	TR218A	4	6R28	-	-
16.9/18.4R26/28	TR218A	3	6R32	4	6PR32
28LR26	TR218A	1	6R34	1	6PR34
16.9/18.4R30	TR218A	2	6R36	2	6PR36
14.9R30	TR218A	4	6R38	-	-
23.1R30	TR218A	2	6R40	1	6PR40
13.6R-34/36	TR218A	4	6R41	-	-
9.5/11.2R32/34	TR218A	5	6R42	-	-
24.5R32	TR218A	1	6R44	1	6PR44
14.9R34	TR218A	3	6R46	-	-
14.9R36	TR218A	4	6R47	-	-
16.9/18.4R34	TR218A	2	6R48	3	6PR48
11.2/12.4R36/38	TR218A	3	6R49	-	-
13.6/14.9R36/38	TR218A	3	6R52	3	6PR52
13.6/14.9R38	TR218A	3	6R53	-	-
15.5R38	TR218A	3	6R55	2	6PR55
16.9/18.4R38	TR218A	2	6R59	2	6PR59
710/70R38	TR218A	-	-	1	6PR60
20.8R38	TR218A	2	6R61	2	6PR61
20.8R34	TR218A	2	6R64	2	6PR64
30.5LR32	TR218A	1	6R67	1	6PR67
9.5/11.2/12.4R42	TR218A	5	6R68	4	6PR68
18.4/20.8R42	TR218A	2	6R70	1	6PR70
12.4/13.6/14.9R46	TR218A	3	6R77	-	-
14.9R46	TR218A	-	-	1	6PR80
16.9/18.4R46	TR218A	2	6R85-2	2	6PR85
9.5R48	TR218A	-	-	5	6PR91NB
270/95R52/54	TR218A	-	-	1	6PR94
16.9/18.4R50	TR218A	-	-	1	6PR96



The quality of the Trans American Rubber 5-STAR PREMIUM Tube surpasses any other farm tube in the market.

–M.S., Colorado



NATURAL RUBBER TUBES

OTR's TRANS AMERICAN RUBBER NATURAL RUBBER inner tubes are desirable for certain applications due to their inherent balance of physical properties essential for high-performance engineering applications. High strength, long fatigue life, excellent elasticity, and good temperature flexibility are just some of the attributes that end-users can expect.

Tube Size	Valve	Box Quantity	Part Number
23.1R-34	TR-218A	1	6R20NR
23.1LR-26	TR-218A	2	6R22NR
28LR-26	TR-218A	1	6R34NR
30.5LR-32	TR-218A	1	6R67NR
16.9/18.4R-26	TR-218A	3	6R32NR
16.9/18.4R-30	TR-218A	4	6R36NR
16.9/18.4R-34	TR-218A	3	6R48NR
24.5R-32	TR-218A	2	6R44NR
16.9R-38	TR-218A	3	6R58NR
18.4R-38	TR-218A	3	6R59NR
20.8R-38	TR-218A	2	6R61NR
710/70R-38 650/85R-38	TR-218A	2	6R60NR
20.8R-42	TR-218A	1	6R70NR
20.8R-34	TR-218A	3	6R64NR
710/70R-42	TR-218A	1	6R71NR

Wheels



ROTARY CUTTER WHEELS

ROTARY CUTTER wheels are available for select RIB tires. They are designed to withstand shock and vibration with tight tolerancing to ensure durability and performance. All wheels are protected from corrosion and exposure to extreme weather. Sizes range from 12 to 18 inches, in one- and two-piece configurations.



Wheel Size	Fits Tire Size	Diameter	Depth	Bolt Pattern	Pilot Hole	Nut Angle	Color	Pieces	Part Number
		IN (MM)	IN (MM)	IN (MM)	IN (MM)				
12X5	21X7.00-12	12 (304.8)	5 (127.0)	5 ON 5.5 (5 ON 139.7)	4 (101.6)	FLAT	BLACK	1	W125002
12X5	21X7.00-12	12 (304.8)	5 (127.0)	4 ON 5 (4 ON 127.0)	3.65 (92.7)	90°	JD YELLOW	1	1205002572
12X5.5	21X7.00-12	12 (304.8)	5.5 (139.7)	4 ON 5 (4 ON 127.0)	3.65 (92.7)	90°	BLACK	2	W1255001
12X5.5	21X7.00-12	12 (304.8)	5.5 (139.7)	4 ON 5 (4 ON 127.0)	3.6 (91.4)	90°	JD YELLOW	2	W1255004
14X6.00	24X8.00-14	14 (355.6)	6 (152.4)	4 ON 5 (4 ON 127.0)	3.65 (92.7)	90°	BLACK	2	146001009
14X6.00	24X8.00-14	14 (355.6)	6 (152.4)	5 ON 5.5 (5 ON 139.7)	4 (101.6)	90°	BLACK	2	W146002
14.5X6.00	26X9.00-14.5	14.5 (368.3)	6 (152.4)	5 ON 5.5 (5 ON 139.7)	4 (101.6)	90°	BLACK	2	W1456001
18X6.00	25X7.00-18 27X8.00-18	18 (457.2)	6 (152.4)	5 ON 5.5 (5 ON 139.7)	4 (101.6)	FLAT	BLACK	1	W186004



STANDARD IMPLEMENT WHEELS

STANDARD IMPLEMENT wheels are available in multiple colors – white, black, red, cream, silver, and gray – and in bolt patterns of 6 on 6, 8 on 8, and 6-clamp. Offsets support fitments for popular machines and tires. Also, OTR can provide tire and wheel assemblies for standard implements.



Wheel Size	Fits Tire Size	Diameter	Depth	Bolt Pattern	Offset	Color	Part Number
		IN (MM)	IN (MM)	IN (MM)	IN (MM)		
12X10.50	26X12-12	12 (304.8)	10.5 (266.7)	6 ON 6 (6 ON 152.4)	0	WHITE	W12105033
16.5X9.75	12-16.5	16.5 (419.1)	9.75 (247.7)	8 ON 8 (8 ON 203.2)	1.09 (27.7)	BLACK	W165975013
17.5X10.5	14-17.5	17.5 (444.5)	10.5 (266.7)	6 ON 6 (6 ON 152.4)	1.12 (28.4)	RED	W175105008
17.5X10.5	14-17.5	17.5 (444.5)	10.5 (266.7)	8 ON 8 (8 ON 203.2)	-1.49 (-37.8)	SILVER	W175105009
17.5X10.5	14-17.5	17.5 (444.5)	10.5 (266.7)	8 ON 8 (8 ON 203.2)	-1.5 (-38.1)	SILVER	W175105003
19.5X6	225R19.5 70R19.5	19.5 (495.3)	6 (152.4)	8 ON 8 (8 ON 203.2)	0.38 (9.7)	CREAM	W1956003
22.5X8.25	11R22.5	22.5 (571.5)	8.25 (209.6)	8 ON 8 (8 ON 203.2)	0.75 (19.1)	CREAM	W225825016
22.5X8.25	11R22.5	22.5 (571.5)	8.25 (209.6)	8 ON 8 (8 ON 203.2)	-1.5 (-38.1)	CREAM	W225825014
22.5X11.75	315R22.5 80R22.5	22.5 (571.5)	11.75 (298.5)	8 ON 8 (8 ON 203.2)	-0.5 (-12.7)	CREAM	W2251175009
22.5X13	385R22.5 445R22.5	22.5 (571.5)	13 (330.2)	8 ON 8 (8 ON 203.2)	1.125 (28.6)	CREAM	W22513009
22.5X13	385R22.5 445R22.5	22.5 (571.5)	13 (330.2)	8 ON 8 (8 ON 203.2)	-1.5 (-38.1)	CREAM	W22513008
28X10	11.2-28 12.4-28	28 (711.2)	10 (254.0)	6 CLAMP	-	SILVER	W2810003
28X12	13.6-28 14.9-28	28 (711.2)	12 (304.8)	6 CLAMP	-	SILVER	W2812005

PIVOT WHEELS

PIVOT wheels are available for irrigation equipment in popular sizes with 8-hole, 9-hole, and 8-on-8 bolt patterns in common offsets. Reverse mount units are available, as well as wheel color options. Standard units are galvanized for corrosion protection. Select wheels feature valve guards.



Wheel Size	Fits Tire Size	Diameter	Depth	Bolt Pattern	Offset	Color	Part Number
		IN (MM)	IN (MM)	IN (MM)	IN (MM)		
24X8	11.2/14.9-24	24 (609.6)	8 (203.2)	8 ON 8 (8 ON 203.2)	-2 (-50.8)	GALVANIZED	W248004*
24X10	11.2/14.9-24	24 (609.6)	10 (254.0)	8 ON 8 (8 ON 203.2)	-2 (-50.8)	GALVANIZED	W2410001*
24X10	11.2/14.9-24	24 (609.6)	10 (254.0)	8 ON 8 (8 ON 203.2)	0	GALVANIZED	W2410012
24X10	11.2/14.9-24	24 (609.6)	10 (254.0)	9 ON 9.5 (9 ON 241.3)	1 (25.4)	YELLOW	W2410003
24X10	16.9-24	24 (609.6)	10 (254.0)	8 ON 8 (8 ON 203.2)	-2.93 (-74.4)	YELLOW	W2410010
24X12	14.9/16.9-24	24 (609.6)	12 (304.8)	8 ON 8 (8 ON 203.2)	-2 (-50.8)	GALVANIZED	W2412011*
24X15	16.9-24	24 (609.6)	15 (381.0)	8 ON 8 (8 ON 203.2)	-3.5 (-88.9)	GALVANIZED	W2415011
24.5X8.25	11-24.5	24.5 (622.3)	8.25 (209.6)	8 ON 8 (8 ON 203.2)	2 (50.8)	SILVER	W245825002
24.5X8.25	11-24.5	24.5 (622.3)	8.25 (209.6)	9 ON 9.5 (9 ON 241.3)	-7.9 (-200.7)	YELLOW	W245825009
38X10	11.2/12.4/13.6-38	38 (965.2)	10 (254.0)	9 ON 9.5 (9 ON 241.3)	1.75 (44.5)	YELLOW	W3810003
38X10	11.2/12.4/13.6-38	38 (965.2)	10 (254.0)	8 ON 8 (8 ON 203.2)	2 (50.8)	GALVANIZED	W3810015*
38X10	11.2/12.4/13.6-38	38 (965.2)	10 (254.0)	8 ON 8 (8 ON 203.2)	-1.72 (-43.7)	GALVANIZED	W38100015*
38X12	11.2/12.4/13.6-38	38 (965.2)	12 (304.8)	8 ON 8 (8 ON 203.2)	1.77 (45.0)	GALVANIZED	W-103193

*INCLUDES VALVE GUARD.

Accessories

AGRICULTURAL BEARINGS

OEM spec bearings for increased bearing life and reduced downtime.



Bearing Size	Type
IN (MM)	
1.18 (30)	X-HOLE WATERPUMP BEARING
1.18 (30)	X-HOLE WATERPUMP BEARING IN 40MM SLEEVE
1.18 (30)	GROOVE WATERPUMP BEARING
1.18 (30)	GROOVE WATERPUMP BEARING IN 40MM SLEEVE
1.57 (40)	SINGLE-ROW BALL BEARING
1.57 (40)	DOUBLE-ROW BALL BEARING
1.77 (45)	BALL BEARING

Services

MOUNTING & SEQUENCING

In addition to tires and wheels, OTR provides tire and wheel mounting, sequencing, just-in-time delivery, and warehousing for OEM customers. Facilities are located around the world, close to OEM customer locations. Key processes are automated with automatic tire inflation systems that are repeatable and accurate.



TyrLyner®

TyrLyner® is a proprietary rubber urethane securely applied to the inside of a tire's casing to extend life and enhance safe operation. Its "self-healing" technology ensures the tire is sealed when punctured or cut by objects up to ¼-inch diameter. The coating is applied at an OTR facility for original equipment manufacturers and distributors who support fleets and owner-operators engaged in construction work, where downtime is NOT an option.



Custom Engineering

CUSTOM TIRES & ASSEMBLIES

OTR continues to develop new agriculture tires and assemblies with an emphasis on enhancing productivity, utilization, comfort, and safety. We can create custom solutions for every tire and assembly type: pneumatic, semi-pneumatic, plastic, flat-free, and solid. And we use advanced technologies to make the process as efficient and effective as possible.



One of the advanced design technologies that OTR implements to develop new tire solutions is the exclusive TreadIQ™ platform. The first of its kind for off-the-road tire design, TreadIQ allows our engineering team to fast-track custom tire design by tapping into information from thousands of previous tread designs and historical performance analytics.

The process for new tire design typically involves months of back and forth between the engineering team and the customer to fine tune performance aspects and aesthetics. With TreadIQ, OTR engineers can input preferences from all project stakeholders during a single meeting and multiple original and functional 3D tread design models are generated in moments. The tool makes it possible to finalize a tire concept in as little as one day.

After a design concept is frozen, OTR can also produce a full-size 3D-printed prototype to perform confirmation testing and allow customers to better gauge aesthetic qualities.

Learn more at: otrwheel.com/TreadIQ



SPECIALTY WHEELS

OTR designs and manufactures custom steel wheels. Examples include:

- Trailer wheels for header transport, baler, and utility applications.
- Custom wheels for small- to medium-sized tractors.
- Cast disc wheels up to 42 inches in diameter for utility tractors producing 130+ horsepower. These wheels fit popular agricultural tires, including low sidewall versions, with designs approved and preferred by OEM customers.



BALLAST COUNTERWEIGHTS

OTR designs and manufactures custom ballast counterweights to meet customer specifications. Previous project examples include cast-disc wheels and wheel weights to increase tractor stability and traction, as well as a 1,500-pound bumper counterweight to improve wheel loader balance.





CONTACT INFORMATION

OEM Inquiries: Contact your local OTR salesperson or email sales@otrwheel.com.

Aftermarket Inquiries: Contact your local OTR salesperson or call 800-833-6309 (east of the Mississippi River) or 888-455-4910 (west of the Mississippi).

Trans American Rubber Tubes, Flaps, or Accessories: Call 800-922-8823 for additional information.

WARRANTY INFORMATION

OTR's standard Mechanical Warranty can be found at otrwheel.com/general-information-and-technical-support-training-warranty/

TERMS & CONDITIONS

OTR's standard terms and conditions of sale outline the rights, responsibilities, and obligations of both the seller and the buyer of OTR products and services. These terms cover pricing, taxes, terms of payment, delivery, warranty, patent indemnity, limitations of liability, etc. For more information visit: otrwheel.com/terms-conditions/

CATALOG DISCLAIMER

Product specifications and information were correct as of the date of this catalog release but are subject to change without notice or obligation. Every effort has been made to ensure the accuracy of this catalog. Consult with your salesperson if you wish to verify data is correct.

ISO 9001: 2015 CERTIFICATION

OTR facilities are ISO 9001: 2015 registered (except for new locations where certifications are in process). ISO ensures consistent product quality, standardization, documentation, and compliance with OEM requirements.

REACH COMPLIANCE

OTR's custom tires for OEMs can be designed with REACH compliance. Consult with your salesperson as needed.

Agriculture **Disclaimers & Notes**

A series of horizontal dotted lines spanning the width of the page, intended for writing or drawing.



Engineered Solutions

OTR's Commitment:

SOLUTIONS

OTR doesn't just sell tires and wheels, we diagnose problems and provide solutions.

VALUE

OTR optimizes ROI with high performance & value-added services to deliver results.

INNOVATION

OTR has a passion for innovating solutions that exceed customer expectations.

PARTNERSHIP

We're not just a vendor, we're a long-term partner who will support your business.

+1.800.833.6309

www.otrwheel.com

