

POWERSPORTS



350 SUPER MAG



ROCK JAW



TRAIL WARRIOR



OTR WHEEL ENGINEERING, INC. (OTR) is your global partner for high-quality, engineered, off-the-road tires, wheels, assemblies and accessories. Thank you for choosing OTR as a resource to help find the right solution for your vehicle or machine. We are proud to supply well-known original equipment manufacturers and aftermarket customers in the Powersports market, garnering a reputation as a solutions provider, using customer feedback to develop innovative products and services that solve problems and add value.

COMPANY OVERVIEW

OTR is a multinational enterprise with over 1,000 employees dedicated to supporting customers around the world. Core markets include Powersports, Lawn & Garden, Industrial, Construction, Mining, Forestry, Material Handling, Agricultural and Specialty Vehicles.

OTR's global infrastructure comprises 38 manufacturing facilities and warehouses located in the U.S., Canada, Europe, and Asia. Our business model is based not only on developing, manufacturing and supplying market-driven products, but also services such as warehousing, tire mounting, sequencing, tire liner, foam-fill and modular assembly in facilities located near customers. We also support a network of distribution partners servicing local markets with one-stop-shopping for OTR products.

POWERSPORTS

OTR's product line-up for powersports is the result of many years of experience, innovations and a hands-on approach that ensures our products get the job done. Whether you are focused on recreation, the jobsite, comfort and safety or value for the money, OTR's team will help you find the right solution.





TABLE OF CONTENTS

POWERSPORTS

TIRES

ALL PURPOSE/WORKSITE

350 MAG 6

350 SUPER MAG 6

440 MAG 7

TM-440 7

PROWLER 8

ROUGH TERRAIN

ROCK JAW 8

BEAST 8

TOMAHAWK 9

BIG FOOT 9

22 MAG 9

ALL TERRAIN

DIRT MASTER 10

WIZZARD 10

WIZZARD R2 11

TRAIL WARRIOR 11

PRO TERRAIN 11

HP-007 12

HP-009 12

250 SWIFT 12

WHEELS

POWERSPORTS WHEELS 13

NEVER DOWN™

NEVER DOWN™ TIRE & WHEEL ASSEMBLIES 14

INFORMATION

CONTACT INFORMATION 15

WARRANTY INFORMATION 15

ISO CERTIFICATION 15

POWERSPORTS



TyrLyner®

TyrLyner® is a proprietary material securely applied to the inside of a tire's casing to extend life and enhance safe operation. Its "self-healing" technology ensures the tire is sealed when punctured or cut by objects up to ¼". It's available for RTVs used in worksites (but NOT recommended for high-speed ATV/UTV use). The coating is applied at an OTR facility for customers looking to enhance tire safety and productivity.

GREAT ALL AROUND TIRE



"The 350 MAG is a great all-around UTV/ATV tire. This tire works great on or off road and in multiple terrains. It has a tough 6-ply build to repel the hazards of riding in timbers and other off the road spaces. The tread pattern gives a smooth ride on hard surfaces from lawn to highway. We recommend the 350 MAG to all our customers looking for that great all around tire!"

Rob Desotel, Cedar Rapids Tire



POWERSPORTS

QUICK REFERENCE GUIDE

ALL PURPOSE / WORKSITE

All-purpose tires driven over any terrain and asphalt too, hauling cargo at a jobsite or driving off-road just for fun. OTR's line-up includes tires preferred and used on OEM equipment that are proven with end users. Some of our most popular models—350 Mag, 350 Super Mag and Prowler—are designed specifically for versatility, ruggedness and comfort.



350 MAG

6



350 SUPER MAG

6



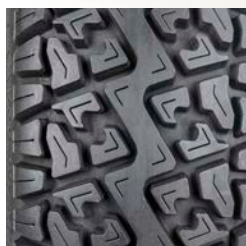
440 MAG

7



TM-440

7



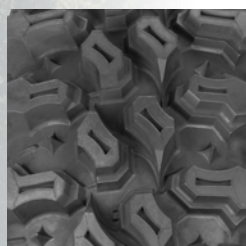
PROWLER

8

OTR'S 350 SUPER MAG is one of our most popular tires. It's hybrid tread design delivers super performance, whether for work or play, with more durability and a comfortable ride.

ROUGH TERRAIN

OTR offers tires designed for extreme off-road use, driving on rocks, up mountains or through deep mud, with extraordinary grip and handling. Newer products such as the Dirt Master and Rock Jaw feature innovative tread patterns, with deep lugs, rock ejectors and mud breakers for self-cleaning. Everything the serious off-roader needs.



ROCK JAW

8



BEAST

8



TOMAHAWK

9



BIG FOOT

9



22 MAG

9



QUICK REFERENCE GUIDE

POWERSPORTS

ALL-TERRAIN

All-terrain tires work for any off-road surface. Whether driving through mud, muck, water or sand, tires like the Wizzard, Trail Warrior and HP-009 keep you moving forward, safely and comfortably. These tires were designed for durability, stability, versatility and a smooth ride.



DIRT MASTER 10



WIZZARD 10



WIZZARD R2 11



TRAIL WARRIOR 11



PRO TERRAIN 11



HP-007

12

HP-009

12

250 SWIFT

12



POWERSPORTS

350 MAG

350 MAG is one of OTR's best all-around tires, especially for RTV's. Its open, non-directional tread pattern and distinctive diamond-shaped lugs optimize handling and grip, for exceptional performance. It handles heavier loads while providing a comfortable ride, making it a preferred tire for original equipment.



PART #	DESCRIPTION	PR	RIM	PSI	SW	OD	LOAD (LBS) @ 65MPH
T243504166508	16X6.50-8	4	8X5.375	28	6.3	16.02	310
T2435041885010	18X8.50-10	4	10X7	22	8	17.9	395
T2435061885010	18X8.50-10	6	10X7	32	8	17.9	505
T24350418105010	18X10.50-10	4	10X8.5	24	9.5	17.9	535
T24350618105010	18X10.50-10	6	10X8.5	36	9.5	17.9	660
T2435042010008	20X10.00-8	4	8X7	22	10.04	19.69	585
T24350622110010	22X11.00-10	6	10X8	34	10.83	21.89	935
T24350623105012	23X10.50-12	6	12X8.5	22	10.31	22.91	705
T24350623105014	23X10.50-14	6	14X9	36	10.39	22.83	910
T24350624090012	24X9.00-12	6	12X7	22	9.1	23.85	645
T24350624110012	24X11.00-12	6	12X8.5	22	10.43	24.33	785
T2435062580012	25X8.00-12	6	12X6.5	24	8.28	24.87	660
T2435062590012	25X9.00-12	6	12X8.5	22	8.9	24.88	695
T24350625100012	25X10.00-12	6	12X8.5	24	10.2	25.12	805
T24350625110012	25X11.00-12	6	12X8.5	24	10.51	25.08	885
T2435062690014	26X9.00-14	6	14X7	20	8.86	26.16	660
T24350626110014	26X11.00-14	6	14X9	22	11.02	25.91	880
T24350426120012	26X12.00-12	4	12X10.5	20	12	26.2	935
T24350626120012	26X12.00-12	6	12X10.5	30	12	26.2	1170

350 SUPER MAG



350 SUPER MAG shares the same shoulder lugs as the 350 Mag for grip and handling—especially in corners—but adds center tread elements to reduce rolling resistance on hard surfaces, such as asphalt, to reduce noise and improve durability. It's also designed to support higher inflation pressures and heavier loads, making it ideal for the worksite as well.

PART #	DESCRIPTION	PR	RIM	PSI	SW	OD	LOAD (LBS) @ 65MPH
T154062590012H	25X9.00-12	6	12X7	32	8.73	24.85	880
T1540625100012H	25X10.00-12	6	12X8.5	32	9.97	25	965
T1540625110012H	25X11.00-12	6	12X8.5	34	10.75	24.97	1100



440 MAG

POWERSPORTS



440 MAG delivers a lot of bang, with a design that optimizes traction, stability and ride comfort. Deep lugs—with flat tread blocks—provide excellent traction on soft and hard ground. Lugs are grooved as well, to channel mud and water away from the tire. It's preferred by OEMs and popular tire with end users.

PART #	DESCRIPTION	PR	RIM	PSI	SW	OD	LOAD (LBS) @ 65MPH
T244404166508	16X6.50-8	4	8X5.375	28	6.14	15.98	310
T2444042010008	20X10.00-8	4	8X7	22	10.06	19.84	585
T2444062490012	24X9.00-12	6	12X7	22	8.9	23.7	645
T24440624110012	24X11.00-12	6	12X8.5	22	10.43	24.33	785
T2444062580012	25X8.00-12	6	12X6.5	24	8.03	24.79	660
T24440042590012	25X9.00-12	4	12X8.5	22	9.05	24.88	695
T24440625100012	25X10.00-12	6	12X8.5	24	10.12	25.15	805
T244406251000R12	25X10.00R12	***	12X8.5	24	9.85	25.2	785
T24440625110012	25X11.00-12	6	12X8.5	24	10.83	25.12	885
T244406251100R12	25X11.00R12	***	12X8.5	24	11.7	25.1	885

POWERSPORTS

TM-440

TM-440 is a variation of OTR's 440 Mag, with a similarly aggressive tread pattern and angled lugs—scaloped across the top for improved cleaning—and mud breakers on the shoulders. It's equally durable but weighs less making it ideal for worksites.



PART #	DESCRIPTION	PR	RIM	PSI	SW	OD	LOAD (LBS) @ 65MPH
T184042580012	25X8.00-12	4	12X6.5	24	7.68	24.88	665
T1840425100012	25X10.00-12	4	12X7.5	22	9.21	25.3	785



POWERSPORTS

PROWLER

PROWLER is an exceptional all-purpose tire featuring “V” shaped shoulder lugs with sipes for improved grip, handling and cleaning. It features a center tread element for improved durability on hard surfaces that also reduces road noise. A 6-ply-rated version is available for heavier loading, as required at worksites.



PART #	DESCRIPTION	PR	RIM	PSI	SW	OD	LOAD (LBS) @ 65MPH
T1550423105012	23X10.50-12	4	12X8.5	20	10.28	22.72	665
T1550423105014	23X10.50-14	4	14X8	24	10.24	22.87	715
T1550625100012H	25X10.00-12	6	12X8.5	32	9.88	24.96	965

ROCK JAW

**NEW
PRODUCT**



ROCK JAW delivers jaw-dropping performance and ruggedness. Its 8-ply rated for ultra-heavy-duty use, with deep angled lugs interspersed with triangle-shaped rock ejectors and mud breakers running across the shoulders. Inspired by feedback from racers and enthusiasts, this is our toughest and most radical tire for the serious off-roader.

PART #	DESCRIPTION	PR	RIM	PSI	SW	OD	LOAD (LBS) @ 65MPH
T19708301000R14	30X10.00R14	8	14X7	44	9.51	30.12	1520

BEAST

BEAST is a ruggedly constructed non-directional tire featuring extra deep alternating “V” and “X” shaped lugs for traction, and grooves in the voids between lugs to channel water away. It's truly a beast in handling rough terrain.



PART #	DESCRIPTION	PR	RIM	PSI	SW	OD	LOAD (LBS) @ 65MPH
T1440626100012	26X10.00-12	6	12X8.5	32	10.2	26.02	990



TOMAHAWK

POWERSPORTS



TOMAHAWK is one of our best-performing off-road tires, delivering exceptional traction in mud and on rough terrain. Its striking looks, durable construction and aggressive lugs with zig-zag sipes (for improved drainage), ensure maximum grip and comfort. It also features rock and mud ejectors to keep the tire as clean as possible on the trail.

PART #	DESCRIPTION	PR	RIM	PSI	SW	OD	LOAD (LBS) @ 65MPH
T120062580012	25X8.00-12	6	12X6.5	34	8.2	25.23	825
T1200625100012	25X10.00-12	6	12X8	32	9.83	24.98	965
T120062790014	27X9.00-14	6	14X7	32	8.76	27.01	965
T1200627110014	27X11.00-14	6	14X9	32	11.12	26.92	1155
T1200630100014	30X10.00-14	6	14X7	32	10.39	30.21	1230

POWERSPORTS

BIG FOOT

BIG FOOT is an aggressive-looking tire with ultra-deep lugs and a low void-to-tread ratio that makes ideal for driving over rough terrain. It's not only rugged and long-lasting, it performs extraordinarily well in mud and water, ensuring maximum grip and stability.



PART #	DESCRIPTION	PR	RIM	PSI	SW	OD	LOAD (LBS) @ 65MPH
T60048320	8.3X20	6	20X7	34	9.49	35	1235 @25MPH

22 MAG



22 MAG is a versatile tire with a bar tread design for improved traction and stability on a variety of surfaces. It's plenty durable for rough terrain, capable of supporting heavier loads if used at a worksite, making it a good value for the money.

PART #	DESCRIPTION	PR	RIM	PSI	SW	OD	LOAD (LBS) @ 65MPH
T2404222111008	21X11.00-8	4	8X8.5	22	10.9	21.2	660
T24042222110010	22X11.00-10	4	10X8.5	22	10.8	22	715
T24042225110010	22.5X11.00-10	4	10X8.5	22	10.8	22.2	740



POWERSPORTS

DIRT MASTER

DIRT MASTER is one of our best all-around off-road tires. Its "V" shaped embossed tread blocks improve grip in mud; overlapping center lugs ensure a smooth, quiet ride, even on hard surfaces. Grooves in the voids between lugs—running across the tire's shoulders—channel water and mud away to maintain grip and handling at all times.



PART #	DESCRIPTION	PR	RIM	PSI	SW	OD	LOAD (LBS) @ 65MPH
T1870626900R14	26X9.00R14	6	14X6	32	8.27	26.18	910
T18706261100R14	26X11.00R14	6	14X8	34	10.47	26.32	1140
T1870627900R14	27X9.00R14	6	14X6.5	34	9	27	985
T18706271100R14	27X11.00R14	6	14X8	34	11	27	1200
T1870629800R15	29X8.00R15	6	15X6	32	7.72	29.32	980
T18706291000R15	29X10.00R15	6	15X7.5	32	9.78	29.51	1140

WIZZARD



WIZZARD is a popular all-terrain tire featuring a center tread element for better stability on hard surfaces, and deep "V" shaped shoulder lugs for sidewall protection and self-cleaning. It's a proven race tire, delivering excellent traction and tire life, with a design that soaks up shock and vibration.

PART #	DESCRIPTION	PR	RIM	PSI	SW	OD	LOAD (LBS) @ 65MPH
T114062690014	26x9.00-14	6	14x7	32	8.15	25.91	910
T1140626900R14	26x9.00R14	6	14x7	32	8.46	26.22	910
T1140626110014	26x11.00-14	6	14x9	34	10.47	26.06	1140
T11406261100R14	26x11.00R14	6	14x9	34	10.75	26.1	1140
T1140627900R14	27x9.00R14	6	14x7	14	8.66	26.97	590
T2080627900R14P	27x11.00R14	6	14x8	34	11	27	1200
T1140628900R14	28x9.00R14	6	14x7	32	9	28	1020
T11406281000R14	28x10.00R14	6	14x7	32	10	28	1140
T11406281100R14	28x11.00R14	6	14x8	34	11	28	1230



WIZZARD R2

POWERSPORTS



WIZZARD R2 is a variation of the popular Wizzard, featuring distinctive "W" shaped shoulder lugs, mud breakers and heavy-duty radial construction. It weighs less but it's durable and long-lasting, making it an ideal tire for side-by-side owners, whether used recreationally or in racing.

PART #	DESCRIPTION	PR	RIM	PSI	SW	OD	LOAD (LBS) @ 62MPH
T1830626900R12P	26X9.00R12	6	12X7	32	9.02	26.1	935
T18306261000R12P	26X10.00R12	6	12X8.5	32	10.08	26.14	990
T1830627900R12	27X9.00R12	6	12X7	32	8.86	27.01	990
T18306271100R12	27X11.00R12	6	12X8.5	34	10.31	27.24	1230
T1830627900R14	27X9.00R14	6	14X7	32	8.62	27.17	965
T18306271100R14	27X11.00R14	6	14X8	34	10.31	27.51	1200
T1830628900R14	28X9.00R14	6	14X7	32	8.72	28.2	1020
T18306281100R14	28X11.00R14	6	14X8	34	10.45	28.2	1230

TRAIL WARRIOR

TRAIL WARRIOR is a rugged directional tire with an 8-ply rating for extra load capacity and durability. Its deep, siped lugs—positioned on the tire's shoulders—combined with radial construction and flexible sidewalls, improve traction while reducing rolling resistance. It's an exceptional multi-terrain tire for serious off-roaders and recreational use as well.



PART #	DESCRIPTION	PR	RIM	PSI	SW	OD	LOAD (LBS) @ 65MPH
T1670827900R14P	27X9.00R14	8	14X7	42	9.09	27.04	1140
T16708271100R14P	27X11.00R14	8	14X8	46	11	27	1430
T16708301000R14P	30X10.00R14	8	14X8	44	10.2	30.04	1520
T16708301000R15P	30X10.00R15	8	15X8	44	10	30.14	1480

PRO TERRAIN



PRO TERRAIN is the pro's choice for a UTV directional tire; it delivers the perfect blend of traction, responsiveness and self-cleaning. Deep lugs with siped ends, coupled with grooved lines in the space between that serve as mud breakers, improve grip and handling, whether driving in mud, through water or on rock.

PART #	DESCRIPTION	PR	RIM	PSI	SW	OD	LOAD (LBS) @ 65MPH
T1590426100012	26X10.00-12	4 & 6	12X7	22 & 32	10.04	26.02	725 & 990
T1590426100014	26X10.00-14	4 & 6	14X7	22 & 32	9.8	25.91	785 & 990



POWERSPORTS

HP-007

HP-007 is a directional off-road tire using deep “V” shaped lugs wrapped around the shoulders and across the contact patch, to optimize traction and handling in corners. Shoulder lugs feature an open top that makes the tire self-cleaning, which in turn improves grip while driving in mud.



PART #	DESCRIPTION	PR	RIM	PSI	SW	OD	LOAD (LBS) @ 65MPH
T2400742580012L	25X8.00-12	4	12X6.5	24	7.55	25.18	660
T24007425100012L	25X10.00-12	4	12X8.5	22	9.03	25.03	785

HP-009



HP-009 is tough and durable, with an optimized lug-to-void ratio for improved traction and cornering. It's mud breakers, makes it popular for ATV owners and racers alike.

PART #	DESCRIPTION	PR	RIM	PSI	SW	OD	LOAD (LBS) @ 65MPH
T2400962790012	27X9.00-12	6	12X7	18	8.73	26.87	710
T24009627110012	27X11.00-12	6	12X9	18	11.18	27.09	835
T2400962790014	27X9.00-14	6	14X7	18	8.7	27.24	680
T24009627110014	27X11.00-14	6	14X9	18	11.02	26.97	825
T24009627900R14P	27X9.00R14	6	14X7	18	8.7	27.24	680
T24009627900R14P	27X11.00R14	6	14X9	18	11.02	26.97	825

250 SWIFT

250 SWIFT is a multi-purpose UTV tire with a cleated lug design for improved traction and cleaning, especially in mud. It features a stiffer sidewall, with a 6-ply version for additional load-bearing capacity.



PART #	DESCRIPTION	PR	RIM	PSI	SW	OD	LOAD (LBS) @ 65MPH
T2425042211008	22X11.00-8	4	8X9	22	11.18	21.81	715
T24250422110010	22X11.00-10	4	10X8.5	22	10.63	21.97	715
T24250625100012	25X10.00-12	6	12X8.5	24	10.16	25.16	805



WHEELS

POWERSPORTS

OTR DESIGNS AND MANUFACTURES CUSTOM STEEL WHEELS for original equipment manufacturers for ATVs, UTVs, RTVs and side-by-side vehicles. We also supply wheels for select vehicles, the NEVER DOWN line (complementing the tire that NEVER goes flat with styled wheels), and golf carts (See Lawn, Garden & Golf section).



OTR custom 14" and 15" wheels for UTV applications--available for aftermarket use.

POWERSPORTS



In addition to manufacturing custom wheels, OTR also wet paints and powder coats wheels per OEM standards.

INTERESTED IN LEARNING MORE? CONTACT YOUR OTR SALESPERSON.



POWERSPORTS

NEVER DOWN™

COMING SOON

THE TIRE THAT CAN RUN WITH NO AIR!

- ✓ NEVER DOWN is designed for utility vehicles driving on rough terrain.
- ✓ NEVER DOWN is sold as a complete assembly — tire, wheel and hardware — for plug & play installation. It replaces the stock vehicle's tires and wheels.



MODEL	REFERENCE	TREAD	TIRE SIZE	WHEEL SIZE
350 MAG	P. 6	UTILITY	25X10.00-14	14X8
350 MAG	P. 6	UTILITY	25X9.00-14	14X7
350 SUPER MAG	P. 6	UTILITY	25X9.00-14	14X7
350 SUPER MAG	P. 6	UTILITY	26X10.00-16	16X9.3
DIRT MASTER	P. 10	UTILITY	27X9.00-16	16X7
WIZZARD	P. 10	UTILITY	27X10.00-16	16X9

NOTE: More tires and wheels will be available. Consult with your OTR salesperson for more information.



WHEELS

NEVER DOWN will include styled aluminum wheels that can be customized. Consult with your OTR salesperson for more information.

WHAT MAKES NEVER DOWN UNIQUE?

- » Looks and behaves like a pneumatic tire, except it's more durable with a higher load-bearing capacity.
- » No air required, no maintenance, no downtime and no loss of productivity.
- » No issue operating in harsh environments; corrosion-resistant assembly.
- » Keeps running even with a puncture thanks to unique construction and high strength.
- » Better value than alternatives in terms of function and pricing.

REPLACING NEVER DOWN TIRES

In the event a tire is damaged or worn and the user wishes to replace the tire, it will be possible to purchase a replacement assembly. Instructions will be provided for the tire installer in the near future.

TIRE PRESSURE MONITORING

For operators who wish to add air to the NEVER DOWN tire, e.g. applications with grass bags fully loaded with wet grass, as a preventive measure for flat-spotting (as is the case for equipment that sits for a period of time), we've included an LED light on the valve stem that turns red if air is removed as a visible indicator.

SUSTAINABILITY PROGRAM

OTR is working on a program that will allow customers to return damaged tires to an authorized facility for recycling, free-of-charge. This environmentally-friendly initiative, called the Green Disposal Program, means there is ZERO PAIN returning used tires!





CONTACT INFORMATION

- For OEM inquiries contact your local OTR salesperson or send an email to sales@otrwheel.com.
- For aftermarket inquiries, contact your local OTR salesperson or call 800-833-6309 if you are located east of the Mississippi River or 888-455-4910 if you are located west of the Mississippi. You may also email us at sales@otrwheel.com.
- For information on Trans American Rubber tubes, flaps or accessories, contact us at 800-922-8823.

WARRANTY INFORMATION

- OTR provides limited warranty coverage for tires, wheels, tracks and other items in the event of defects in workmanship. You may request a copy of our policy by emailing us sales@otrwheel.com.
- Note that OTR has designated select dealers and distributors to assist with warranty repairs. Contact OTR for more information.

CATALOG DISCLAIMER

Product specifications and information were correct as of the date of this catalog release but are subject to change without notice or obligation. Every effort has been made to ensure the accuracy of this catalog. Consult with your salesperson if you wish to verify data is correct.

ISO 9001: 2015 CERTIFICATION

OTR facilities are ISO 9001: 2015 registered (except for new locations where certifications are in process). ISO ensures consistent product quality, standardization, documentation and compliance with OEM requirements.

REACH COMPLIANCE

OTR's custom tires for OEMs can be designed with REACH compliance. Consult with your salesperson as needed.



OTRWHEEL.COM

