

OTR WHEEL ENGINEERING FACT SHEET | 2021

OTR Wheel Engineering, Inc. is a market-leading global enterprise specializing in off-the-road mobility solutions for original equipment manufacturers and the aftermarket. Known for tire and wheel innovations, OTR's broad product range, value-added services and global footprint have solidified our status as a total solutions provider. As a result, OTR has established partnerships with well-known OEMs and distributors. Founded in 1987 by Fred B. Taylor—OTR's current CEO—and headquartered in Rome, Georgia, *the company is recognized as a pioneer in developing and supplying tire and wheel systems that set the standard in construction, material handling and turf markets.*

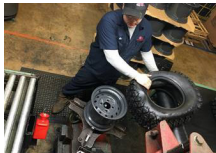
PRODUCT LINES

100,000+ standard items, with the ability to modify parts for custom applications and/or create all-new systems.



SERVICES

Full-range of services, available ala carte according to customer needs, combined with products for a total solution.



Tire Mounting



Warehousing



Foam-Fill



Tire Liner
(TyrLiner®)



Wheel Inspection/
Certification



Subassembly

HIGHLIGHTS



35
Facilities
Worldwide



925
Employees



42
Patents



125+
Unique Tread
Designs

4"-63"
Wheels,
1- to 7-piece



Eco-Friendly
Technolo-
gies Reduce
Waste,
Improve Fuel
Economy

FACILITIES

OTR's global footprint comprises 35 facilities located in N. America, Europe and Asia, ensuring we provide local support to key OEM customers and the aftermarket. Manufacturing locations include the U.S., Canada, China, Thailand and Sri Lanka.



MARKETS SERVED

Products & services support a wide range of markets; designs deliver high-performance in intended applications.



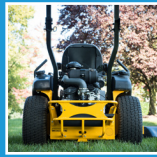
Agriculture



Construction



Forestry



Lawn
& Garden



Material
Handling



Mining



Powersports



Specialty
Vehicle

ENGINEERING CAPABILITIES

Excellence in tire and wheel engineering comes from listening to customers, understanding applications, and leveraging technologies and best-practices to deliver reliable mobility solutions for vehicles and machines operating in the world's harshest environments. This means better productivity, value and safety for our OEM partners.

- **Global Design Teams:** Principal engineering center in Rome, GA, USA with regional design teams located in Omaha, NE, USA; Sault Ste. Marie., Canada; Wuxi, China; and Colombo, Sri Lanka.
- **Core Design Expertise:** Total systems solutions covering specialty tires, wheels, hubs, integrated wheel/hub assemblies, from 8" (203.2 mm) to 63" (1,600.2 mm) in diameter.
- **Software Platforms:** CREO parametric modeling. Legacy applications supported (SolidWorks, AutoCAD, Inventor.)
- **Advanced Tools:** FEA simulations, laser scanning (for benchmarking and design verification), 3D printing for new concept evaluations.
- **Product testing:** In-house testing for tire deflection, static loaded radius, and other tire characteristics. Test tracks employed for tread wear analysis on real-world surface conditions. Additional testing by accredited 3rd party partners.

MANUFACTURING & ASSEMBLY CAPABILITIES

OTR's proven global wheel manufacturing expertise complements excellence in design and applications engineering.

Rims & Wheels:

- Custom manufactured rims & wheels from 10" to 63" for extreme-duty rim applications, featuring seamless forgings for all critical sections.
- Fully machined sections for optimal surface contact.
- Submerged arc circumferential welds with ultrasonic inspection to ensure weld integrity.
- CNC precision-drilled bolt hole patterns up to 1.6 m to ensure tight tolerances.
- Wet and powder coating paint options with advanced pre-treatment and primer systems at facilities in U.S., Canada, China, Thailand and Sri Lanka.

Assembly

- Tire and wheel mounting.
- Component/system subassembly with automation for key operations and mistake-proofing.



QUALITY SYSTEMS

OTR's foundational quality systems are industry and OEM compliant.

- ISO 9001: 2015 (documents available upon request)
- OEM compliant systems for key customers

CERTIFICATIONS

- Tire & Rim Association, Inc. (TRA) and European Tyre & Rim Technical Organization (ETRTO) compliance, as required.
- FMVSS 110 compliance; EU and REACH compliant tires for European markets.
- Select rims meet USA-ASTM Standard: A36/A1011M, A529 and A572; Din Standard: ST 37-2, ST42-2 and ST 52-3; China Standard: Q235, Q275 and Q345

COMPANY INFORMATION

- Parent Company: OTR International, Inc.
- D-U-N-S Number: 62-140-0589
- SIC Code: 5014
- Tax ID Number: 82-2954039 (reference OTR International, Inc.)

REFERENCES

Consult with your OTR representative for customer or supplier references.



www.otrwheel.com